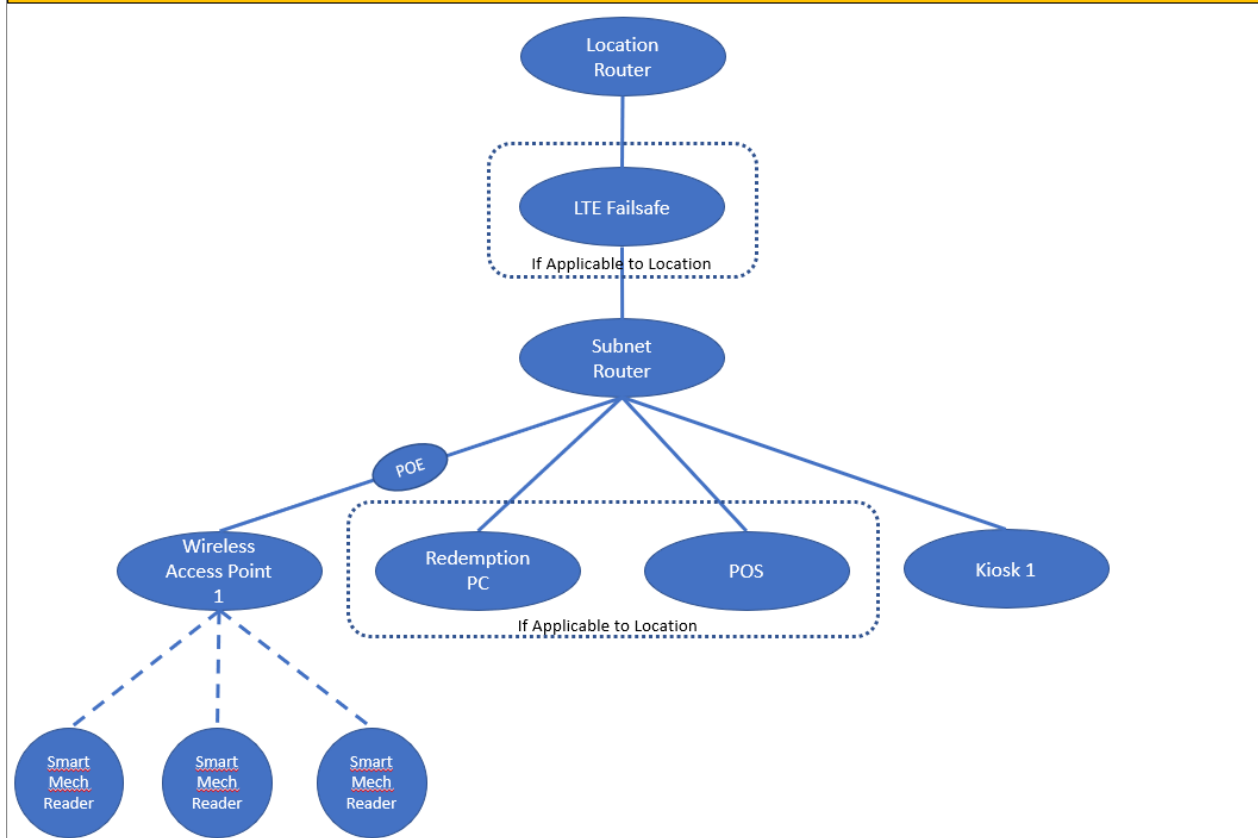


NETWORK CONFIGURATION GUIDE

Purpose: Use this guide to properly set up your Game Room Network. The recommended setup includes our preconfigured SUBNET router and / or our Internet Failover Solution.

Basic Network Setup Diagram (Single Kiosk / WAP)



Network Component Definitions and Information

Location Router- Customer supplied, with DHCP enabled – This is the MAIN router in the location where the Internet Modem is feeding Internet to the router.

LTE Failsafe- *Optional product from Amusement Connect* – This is a preconfigured add-on that provides uninterrupted service should the Location Router fail; the LTE failsafe will keep internet service to the game room running.

Subnet Solution Router- *Recommended product from Amusement Connect* – This provides a subnetwork for the game room and isolates all traffic from the game room from the rest of the location and vice versa. This is important to ensure there are enough IP addresses for all your arcade equipment.

PoE Injector- Provides power to the wireless access point.

Unifi WAP – *Recommended product from Amusement Connect* – This is a wireless access point preconfigured to broadcast the correct network name (SSID) for the readers to wirelessly connect and manage the network in MESH as appropriate.

Network Recommendations

Network Cabling

- CAT5E or better cables
- Pre-packaged cables

Wired Connections to

- LTE Failsafe
- Subnet Solution Router
- Kiosks (Required)
- Unifi WAP
- PrizeZilla
- POS
- Redemption PC

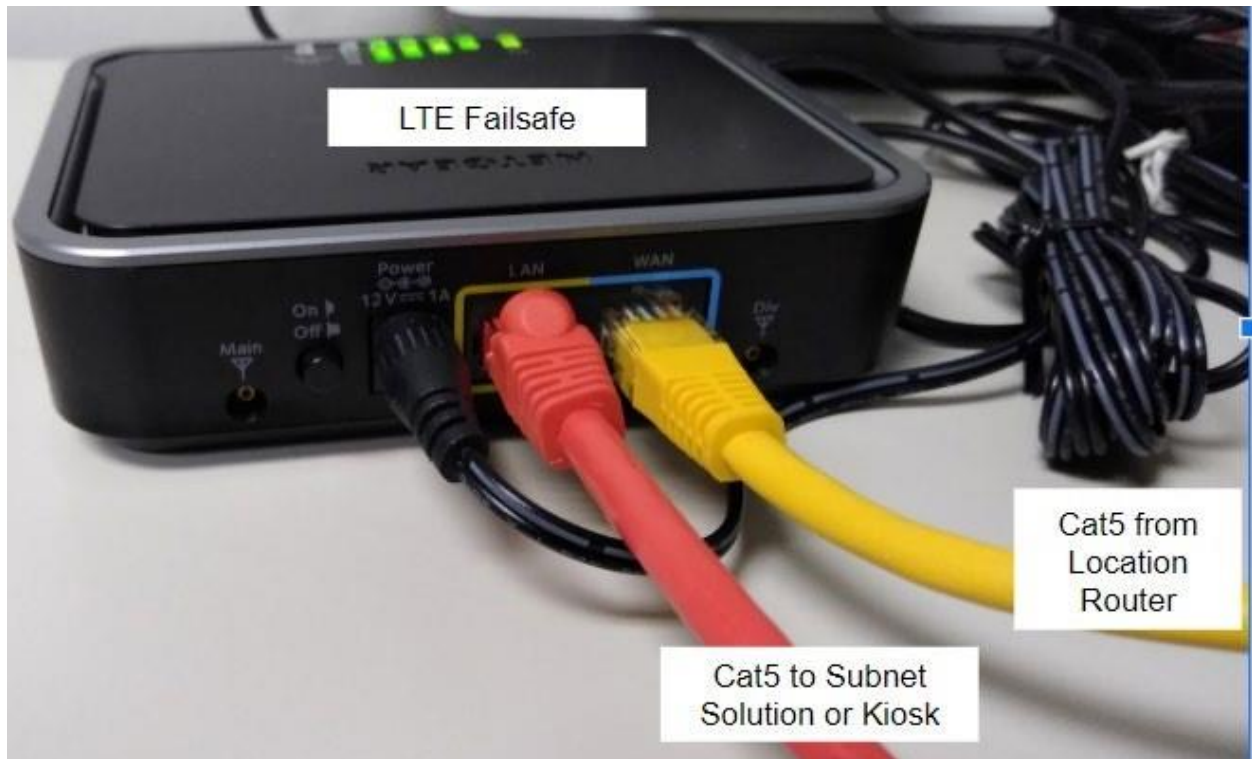
Locations for Equipment Install

- Failsafe, Subnet Router, POE located in secure area near the location router with available power outlets (recommended to have separate power supply than Kiosk)
- Wireless access points are recommended to be installed on ceiling between 12 and 15 feet above the floor. Access points should divide the game room into equal parts.

Network Installation

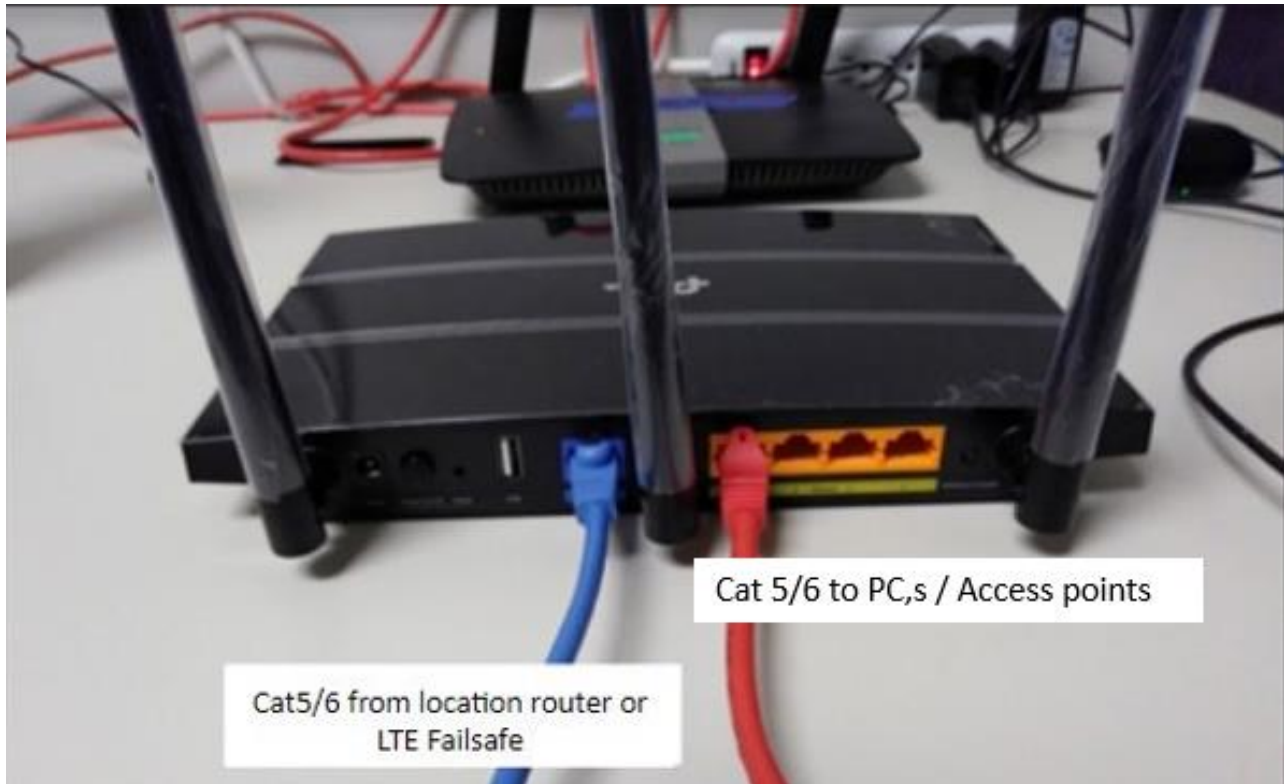
STEP 1 – INTERNET FAILSAFE – (Skip to Step 2 if Failsafe option not selected)

1. Run Cat5 cable from the location router to the blue WAN port
2. Run Cat5 cable from the yellow LAN port the subnet solution router
3. Plug power cable into failsafe router



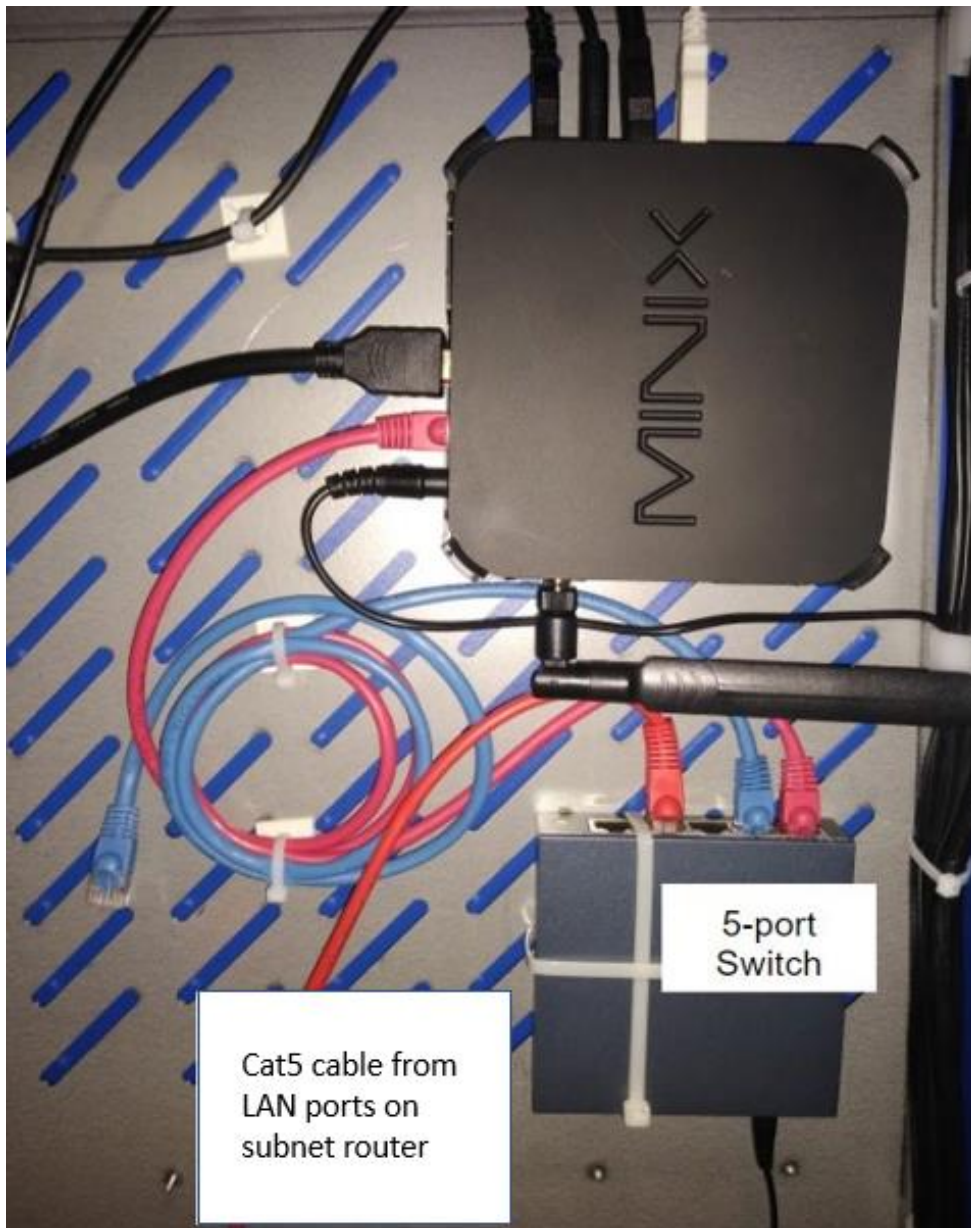
STEP 2 – SUBNET ROUTER

1. The Cat5 from the location router or LTE Failsafe is plugged into the **blue** Internet port.
2. Network connections can then be made between the subnet router, kiosk, redemption PC, POS, and access points



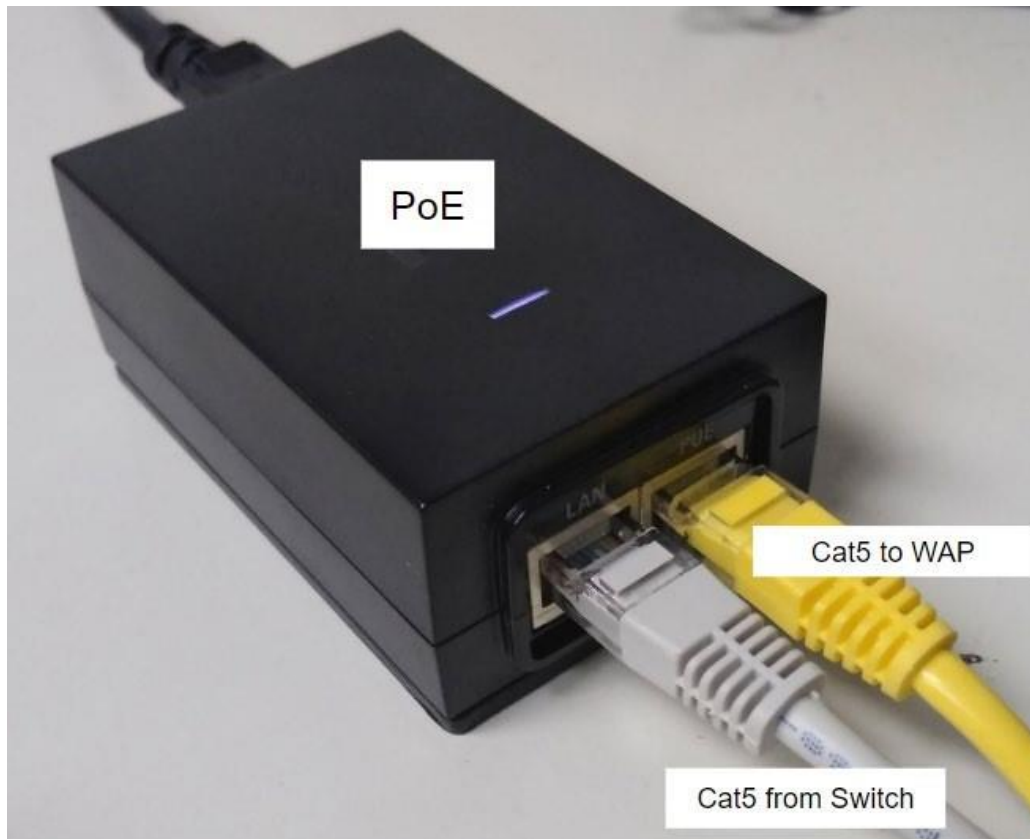
STEP 3 - CONNECTING KIOSK TO THE NETWORK

1. Connect a CAT5 cable from the LAN ports on the subnet router to any port in the 5-port switch in the kiosk.



STEP 4 - CONNECTING WIRELESS ACCESS POINT (UNIFI AP) TO NETWORK

1. Connect the PoE power plug into a power outlet.
2. **One cable** will run from the subnet router to the LAN port on the PoE.
3. **One cable** will run from the PoE port on the PoE adapter and connect to the Unifi WAP.



STEP - CONNECTING OPTIONAL EQUIPMENT TO THE NETWORK

1. PrizeZilla - (Recommended to connect with hard wire)
 - a. One Cat5 cable run directly from the subnet router to the PC mounted inside the door of the PrizeZilla.

2. Redemption PC - (Recommended to connect with hard wire)
 - a. One Cat5 cable run directly from the subnet router to the PC.

3. POS - (Recommended to connect with hard wire)
 - a. One Cat5 cable run directly from the subnet router to the PC.

For more information and questions see the help inside the webapp

Or Call Customer Support at:

1-833-7ARCADE, 1-833-727-2233 Option 2